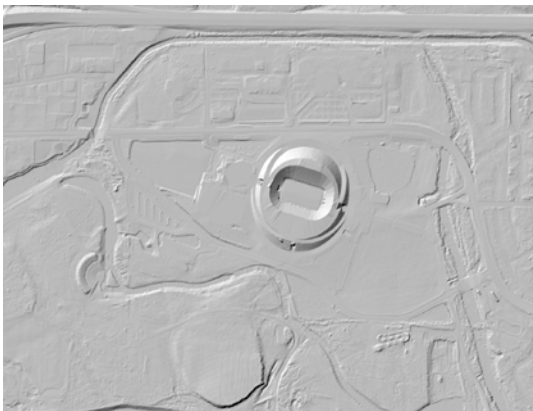


WILLAMETTE VALLEY APWA LUNCHEON

CRESS BATES, FORMERLY OF LANE COUNTY

PRESENTS

LANE COUNTY REGIONAL GIS TOOLS



Cress will provide an overview of how Geographic Information System technology has evolved in Lane County and how GIS is used by local government in their daily operations. This includes access to better aerial photography and advanced elevation data sets.

The regional GIS partners, including Lane County, offer GIS data content via the web. Cress will discuss Lane County's current GIS-related web offerings and future web development plans.

Cress recently retired from Lane County after devoting 36 years of his life to public service in Lane County. He spent the last 4 ½ years working for Lane County on projects including the Parcel Mapping Project, which provides highly accurate coordinate information for the Lane County Tax Lot Base. Prior to that, he spent 32 years with LCOG, beginning with the first parcel level GIS for Lane County.

MEETING SPONSORED BY:



**BALZHISER
& HUBBARD
ENGINEERS**

Luncheon organized by
APWA with Non-Members
always welcome!

TUESDAY, FEBRUARY 16, 2009

Kowloon's Restaurant

2222 Martin Luther King Blvd, Eugene

11:45 TO 1:00 PM

**\$1 DONATION TO SUPPORT LUNCHEON OVERHEAD COSTS AND
THE SPEAKER'S LUNCH.**

THE NEXT LUNCHEON WILL BE APRIL 20, 2010.

BUFFET LUNCH

Chinese buffet will include meat options, a vegetarian dish, rice, soup or salad, and soft drink. Cost will be \$12 including gratuity. Please RSVP to EugeneAPWALuncheon@ci.eugene.or.us by Monday, February 15, 2010.